

# AE Series Pin and Sleeve Plugs, Connectors and Receptacles

## Weatherproof

600 Vac, 250 Vdc. Pressure Wire Terminals.

### Applications

- Designed to supply power to portable or fixed electrical equipment such as:
  - Welders
  - Generators
  - Compressors
  - Pumps
  - Similar apparatus
- Suitable for use in locations where a weatherproof enclosure is required such as:
  - Shipping docks
  - Ports
  - Ship to shore applications

### Features

- Available in 30, 60, and 100 Amp units.
- Contacts exert constant pressure along the entire contact surface, providing electrical continuity. Solid brass contacts with beryllium copper springs.
- Choice of receptacle types: weatherproof spring door or raintight screw cap.
- Plug with clamp ring has neoprene gasket. Ring threads onto screw cap receptacle to provide raintight assembly when properly tightened.
- Cable clamps prevent strain on cables and allow easy cable replacement.
- Mounting box gasket protects receptacle from moisture.
- Insulating blocks provide high degree of dielectric and mechanical strength and lowest moisture absorption, lowest arc tracking.
- Choice of several mounting boxes permits different types of installations.
- Floating-type plug contacts self-align to receptacle contacts.
- Available in two grounding styles: Style 1 (shell only) and Style 2 (shell and extra pole).
- Grounding detent springs in Style 1 and Style 2.
- Grounding strap provided in Style 2 permits extra pole grounding.
- Longer ground contact in Style 2 “makes first and breaks last.”

### Standard Materials

- Plug, connector, receptacle and mounting box housings: copperfree (4/10 of 1% max.) aluminum
- Insulation blocks: fiber glass reinforced phenolic
- Contacts: brass

### Standard Finishes

- Aluminum plug, receptacle, connector, and mounting box housings: epoxy powder coat
- Insulating blocks and contacts: natural finish

### Options

- Reverse Service: useful where a “hot” plug feeds a dead receptacle. Reverse service is often used for generator applications where the receptacle houses a dead plug interior. Plug houses an energized receptacle interior, which has recessed male contacts to reduce danger of accidental touching. Suffix **-RS** to receptacle or connector.

### Certifications and Compliances

- UL Standard: UL 1682, UL 1686



# AE Series 30 Amp Pin and Sleeve Receptacles Connectors and Plugs

## Weatherproof

600 Vac, 250 Vdc. Pressure Wire Terminals. Wire Size Range: #14—#8

Plugs and Receptacles

PLUGS AND RECEPTACLES: ORDINARY LOCATION



Grounding Style	Wire/Pole	Spring Door Receptacle Only	Screw Cap Receptacle Only	Connector Body Only	Clamping Ring Plug	Plug Cable Dia. (Inches)
Style 1 (Shell Only)	2W, 2P	<b>AE321</b>	<b>AE327</b>	<b>APR3251</b>	<b>AEP3251</b>	.625 to .750
	3W, 3P	<b>AE331</b>	<b>AE337</b>	<b>APR3351</b>	<b>AEP3351</b>	.625 to .750
	4W, 4P	<b>AE341</b>	<b>AE347</b>	<b>APR3451</b>	<b>AEP3451</b>	.625 to .750
Style 2 (Shell and Extra Pole)	2W, 3P	<b>AE332</b>	<b>AE338</b>	<b>APR3361</b>	<b>AEP3361</b>	.625 to .750
	3W, 4P	<b>AE342</b>	<b>AE348</b>	<b>APR3461</b>	<b>AEP3461</b>	.625 to .750

### AE Series Mounting Boxes



Hub Size (Inches)	AEE	AERH	AERC	AERA
1/2	<b>AEE13</b>	<b>AERH13</b>	<b>AERC13</b>	<b>AERA13</b>
3/4	<b>AEE23</b>	<b>AERH23</b>	<b>AERC23</b>	<b>AERA23</b>
1	<b>AEE33</b>	<b>AERH33</b>	<b>AERC33</b>	<b>AERA33</b>

### 30 Amp Interiors †



Grounding Style	Wire/Pole	Interior Style 1		Interior Style 2	
		Receptacle	Plug	Receptacle	Plug
Style 1 (Shell Only)	2W, 2P	<b>AEI-321</b>	<b>AEPI-321</b>	—	—
	3W, 3P	<b>AEI-331</b>	<b>AEPI-331</b>	—	—
	4W, 4P	<b>AEI-341</b>	<b>AEPI-341</b>	—	—
Style 2 (Shell and Extra Pole)	2W, 3P	—	—	<b>AEI-332</b>	<b>AEPI-332</b>
	3W, 4P	—	—	<b>AEI-342</b>	<b>AEPI-342</b>

† Pins and sleeves are not sold separately.

# AE Series 60 Amp Pin and Sleeve Receptacles Connectors and Plugs

## Weatherproof

600 Vac, 250 Vdc. Pressure Wire Terminals. Wire Size Range: #8—#4



Grounding Style	Wire/Pole	Spring Door Receptacle Only	Screw Cap Receptacle Only	Connector Body Only	Clamping Ring Plug	Plug Cable Dia. (Inches)
Style 1 (Shell Only)	2W, 2P	<b>AE621</b>	<b>AE627</b>	<b>APR6252</b>	<b>AEP6252</b>	1.000 to 1.312
	3W, 3P	<b>AE631</b>	<b>AE637</b>	<b>APR6352</b>	<b>AEP6352</b>	1.000 to 1.312
	4W, 4P	<b>AE641</b>	<b>AE647</b>	<b>APR6452</b>	<b>AEP6452</b>	1.000 to 1.312
Style 2 (Shell and Extra Pole)	2W, 3P	<b>AE632</b>	<b>AE638</b>	<b>APR6362</b>	<b>AEP6362</b>	1.000 to 1.312
	3W, 4P	<b>AE642</b>	<b>AE648</b>	<b>APR6462</b>	<b>AEP6462</b>	1.000 to 1.312

### AE Series Mounting Boxes



Hub Size (Inches)	AEE	AERH	AERC	AERA	AJA*	AJA Adapter
1	<b>AEE36</b>	<b>AERH36</b>	<b>AERC36</b>	<b>AERA36</b>	<b>AJA310</b>	<b>AJA100</b>
1-1/4	<b>AEE46</b>	<b>AERH46</b>	<b>AERC46</b>	<b>AERA46</b>	<b>AJA410</b>	<b>AJA100</b>
1-1/2	<b>AEE56</b>	<b>AERH56</b>	<b>AERC56</b>	<b>AERA56</b>	<b>AJA510</b>	<b>AJA100</b>
2	—	—	—	—	<b>AJA610</b>	<b>AJA100</b>

### 60 Amp Interiors †



Grounding Style	Wire/Pole	Interior Style 1		Interior Style 2	
		Receptacle	Plug	Receptacle	Plug
Style 1 (Shell Only)	2W, 2P	<b>AEI-621</b>	<b>AEPI-621</b>	—	—
	3W, 3P	<b>AEI-631</b>	<b>AEPI-631</b>	—	—
	4W, 4P	<b>AEI-641</b>	<b>AEPI-641</b>	—	—
Style 2 (Shell and Extra Pole)	2W, 3P	—	—	<b>AEI-632</b>	<b>AEPI-632</b>
	3W, 4P	—	—	<b>AEI-642</b>	<b>AEPI-642</b>

\* AJA Feed Thru box furnished with one close-up plug in bottom recessed hub.

† Pins and sleeves are not sold separately.

# AE Series 100 Amp Pin and Sleeve Receptacles Connectors and Plugs

## Weatherproof

600 Vac, 250 Vdc. Pressure Wire Terminals. Wire Size Range: #3—#1

Plugs and Receptacles

PLUGS AND RECEPTACLES: ORDINARY LOCATION



Grounding Style	Wire/Pole	Spring Door Receptacle Only	Screw Cap Receptacle Only	Connector Body Only	Clamping Ring Plug	Plug Cable Dia. (Inches)
Style 1 (Shell Only)	2W, 2P	AE1021	AE1027	APR10253	AEP10253	.875, 1.437 to 1.750
	3W, 3P	AE1031	AE1037	APR10353	AEP10353	.875, 1.437 to 1.750
	4W, 4P	AE1041	AE1047	APR10453	AEP10453	.875, 1.437 to 1.750
Style 2 (Shell and Extra Pole)	2W, 3P	AE1032	AE1038	APR10363	AEP10363	.875, 1.437 to 1.750
	3W, 4P	AE1042	AE1048	APR10463	AEP10463	.875, 1.437 to 1.750

### AE Series Mounting Boxes



Hub Size (Inches)	AJA *	AJA Adapter	AEE
1	AJA310	AJA100	AEE36
1-1/4	AJA410	AJA100	AEE46
1-1/2	AJA510	AJA100	AEE56
2	AJA610	AJA100	—

### 100 Amp Interiors †



Grounding Style	Wire/Pole	Interiors Style 1		Interiors Style 2	
		Receptacle	Plug	Receptacle	Plug
Style 1 (Shell Only)	2W, 2P	AEI-1021	AEPI-1021	—	—
	3W, 3P	AEI-1031	AEPI-1031	—	—
	4W, 4P	AEI-1041	AEPI-1041	—	—
Style 2 (Shell and Extra Pole)	2W, 3P	—	—	AEI-1032	AEPI-1032
	3W, 4P	—	—	AEI-1042	AEPI-1042

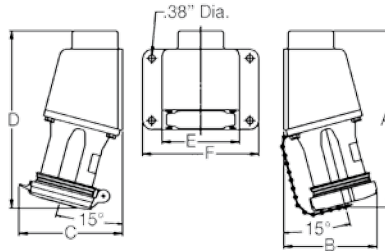
\* AJA Feed Thru box furnished with one close-up plug in bottom recessed hub.

† Pins and sleeves are not sold separately.

# AE Series 30, 60, and 100 Amp Receptacle Dimensions

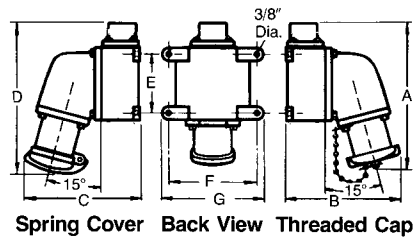
## Pin and Sleeve Plugs, Connectors and Receptacles

### Receptacle Mounted on AEE Box



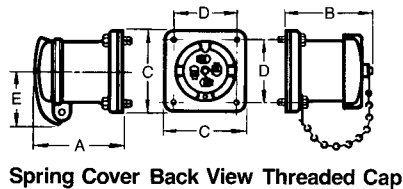
Amp	Dimensions in Inches/Millimeters					
	A	B	C	D	E	F
30	6.88/174.7	3.45/87.6	3.95/100.3	7.13/181.1	4.25/107.9	5.00/127.0
60	9.75/247.6	4.73/120.1	4.98/126.4	10.00/254.0	5.38/136.6	6.38/162.0

### Receptacle Mounted on AJA-AJAC Box



Amp	Dimensions in Inches/Millimeters						
	A	B	C	D	E	F	G
60	8.88/225.5	8.50/215.9	8.50/215.9	10.75/273.0	4.88/123.9	6.88/174.7	7.88/200.1
100	9.50/241.3	9.13/231.9	9.38/238.2	11.44/290.5	4.88/123.9	6.88/174.7	7.88/200.1

### AE Receptacle

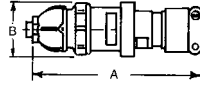


Amp	Dimensions in Inches/Millimeters				
	A	B	C	D	E
30	3.56/90.4	3.44/87.3	3.38/85.9	2.72/69.0	2.19/55.6
60	4.56/115.8	4.38/111.2	4.50/114.3	3.50/88.9	2.69/68.3
100	5.38/136.6	5.19/131.8	4.50/114.3	3.50/88.9	2.81/71.3

# AE Series 30, 60, and 100 Amp Connector, Plug and Mounting Box Dimensions

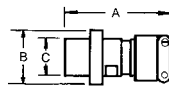
## Pin and Sleeve Plugs, Connectors and Receptacles

### APC Cable Connector



Amp	Dimensions in Inches/Millimeters	
	A	B
30	9.25/234.9	2.94/74.6
60	12.00/304.8	3.69/93.7
100	14.00/355.6	4.13/104.9

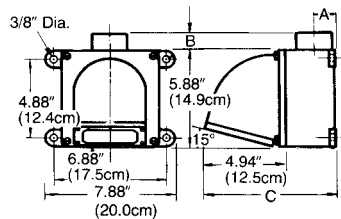
### AEP Plug



Clamping Ring

Amp	Dimensions in Inches/Millimeters		
	A	B	C
30	6.0/152.4	3.19/81.0	2.16/54.8
60	6.0/152.4	3.19/81.0	2.16/54.8
100	8.94/227.0	4.25/107.9	3.13/79.5

### AJAC and AJA Mounting Boxes †



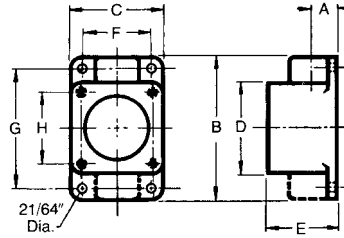
Amp	Hub Size (Inches)	Dimensions in Inches/Millimeters		
		A	B †	C
60, 100 and 150	1	1.13/ 28.7	0.56/14.2	8.0/203.2
	1-1/4	1.13/ 28.7	0.56/14.2	8.0/203.2
	1-1/2	1.50/ 38.1	0.56/14.2	8.0/203.2
	2	1.50/ 38.1	0.56/14.2	8.0/203.2

† AJA has two hubs. Close-up plug furnished in bottom recessed hub.

# AE Series Mounting Box Dimensions

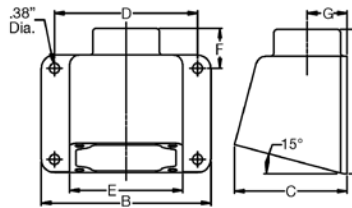
## For AE Series 30, 60, and 100 Amp Receptacles

### AERA \*, AERC ‡ and AERH Mounting Boxes



Amp	Hub Size (Inches)	Dimensions in Inches/Millimeters								
		A *	B ‡	C	D	E	F	G	H	J
30	1/2	0.69/17.5	5.31/134.8	3.38/85.8	3.38/85.8	2.50/63.5	2.63/66.8	4.56/115.8	2.72/69.0	0.94/23.8
30	3/4	0.75/19.0	5.31/134.8	3.38/85.8	3.38/85.8	2.50/63.5	2.63/66.8	4.56/115.8	2.72/69.0	0.94/23.8
30	1	0.81/20.5	5.31/134.8	3.38/85.8	3.38/8.6	2.50/63.5	2.63/66.8	4.56/115.8	2.72/69.0	0.94/23.8
60	1	0.81/20.5	6.50/165.1	4.25/107.9	4.25/107.9	3.13/79.5	3.50/88.9	5.88/149.3	3.50/88.9	1.38/35.0
60	1-1/4	0.94/23.8	6.50/165.1	4.25/107.9	4.25/107.9	3.13/79.5	3.50/88.9	5.88/149.3	3.50/88.9	1.38/35.0
60	1-1/2	1.00/25.4	6.50/165.1	4.25/107.9	4.25/107.9	3.13/79.5	3.50/88.9	5.88/149.3	3.50/88.9	1.38/35.0

### AEE Mounting Box



Amp	Hub Size (Inches)	Dimensions in Inches/Millimeters						
		A	B	C	D	E	F	G
30	1/2, 3/4, 1	4.12/104.6	5.00/127.0	3.33/84.5	4.25/107.9	3.38/85.8	1.18/29.9	1.10/27.9
60 and 100	1, 1-1/4, 1-1/2	5.41/137.4	6.38/162.0	4.23/107.4	5.38/136.6	4.25/107.9	1.50/38.1	1.50/38.1

\* Dimension "A" for AERA only.  
 ‡ Dimension "B" for AERC only.