

## Nonmetallic Sheathed Cable

### Fittings



Cat. No.	Trade Size (in.)	Clamping Range (in.)		Suggested Application
		Min.	Max.	
<b>One Screw Fittings (Zinc Alloy)</b>				
L-16	3/8	0.12	0.63	14/2, 10/2, 14/3, 10/3
CI70	3/8	0.13	0.70	14/2, 12/2, 10/2, 14/3, 10/3
CI71	1/2	0.33	0.95	10/2, 6/2, 12/3, 6/3
CI72	3/4	0.60	1.15	4/2-3/2; 4/3-3/3
CI73	1	0.93	1.47	2/2; 2/3
<b>Two Screw Fittings (Zinc Alloy)</b>				
CI804	3/8	0.18	0.64	14/2-10/2; 2# 14/2 and 2# 12/2
CI806	3/4	0.41	0.82	8/2-6/3
CI808	1	0.50	1.04	4/2-2/2; 8/3-4/3
CI810	1-1/4	0.56	1.06	4/2-2/2; 8/3-4/3
CI812	1-1/2	0.63	1.60	4/2-2/2; 8/3-2/3
CI816	2	0.86	2.06	3/2-2/2; 6/3-2/3
<b>Two Screw Fittings (Steel)</b>				
CI2060	3/8	0.11	0.60	14/2-10/2; 14/3-10/3
CI2061	3/4	0.15	0.90	10/2-6/2; 10/3-6/3
<b>One Screw Fittings (Zinc Alloy)</b>				
CI2163	3/8	0.35	0.61	10/3

CI70



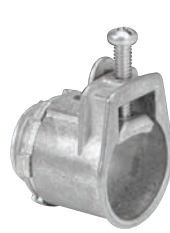
Zinc Die Cast Locknut

L-16



Zinc Die Cast Locknut

CI71 / CI73



Zinc Die Cast Locknut

CI804



Die Cast Locknut

CI806



Zinc Die Cast Locknut

CI808 / CI816



Zinc Die Cast Locknut

CI2060 / CI2061



Zinc Die Cast Locknut

CI2163



Zinc Die Cast Locknut

See specification guide section for dimensions (D38-D39).

All NMD90 fittings are also suitable for NMWU90 of equivalent diameters, in dry locations. **NOTE:** 3/8 in. trade size connectors require a 1/2 in. knockout

Technical improvements are constantly taking place in the electrical industry. Cable manufacturers are changing their products from time to time. Accordingly, it is strongly suggested that you verify the cable size with the cable manufacturer prior to selecting a fitting.

## Nonmetallic Sheathed Cable

### Fittings



Cat. No.	Trade Size (in.)	Clamping Range (in.)		Suggested Application NMD90 (loomex)
		Min.	Max.	
<b>One Screw Fittings (Aluminum)</b>				
CI2166	1/2	0.50	0.90	8/3 – 6/3
CI2167	3/4	0.71	1.10	6/3 – 4/3
<b>Duplex Fittings (Zinc Alloy)</b>				
One Screw CI2175	3/8	0.15	0.65	14/2 – 10/2; 14/3 – 10/3
<b>Nonmetallic Fittings</b>				
CI3360	1/2	0.30	0.60	14/2 – 10/2; 14/3 – 10/3 2 cables: 14/2 – 12/2
CI4004†		0.21	0.42	14/2 – 12/2 – 10/2 – 14/3 – 12/3 – 10/3 2 cables: 2 x 14/2 – 2 x 12/2 1 x 14/2 + 1 x 12/2
W100LX-D		0.21	0.42	
CI4006*†	3/4	0.22	0.65	12/2 – 10/2 – 8/2 – 6/2 – 14/3 – 12/3 – 10/3 – 8/3 – 6/3 2 cables: 2 x 12/2 – 2 x 10/2 1 x 12/2 + 1 x 10/2
W101LX*		0.22	0.65	
<b>One Screw Fittings (Steel)</b>				
CI4040	3/8	0.19	0.57	14/2 – 10/2; 14/3 – 10/3 2 cables: 14/2
CI9049		0.13	0.37	14/2 – 10/2; 14/3 – 12/3

\* For a complete catalogue number add suffix JAR 40, JAR 80 or JAR200 according to the desired quantity (i.e.: W101LX-JAR40, W101LX-JAR80 or W101LX-JAR200).

† UL Listed

CI2166 / CI2167



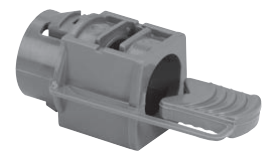
Zinc Die Cast Locknut

CI2175



Zinc Die Cast Locknut

CI3360



CI4004 / W100LX-D



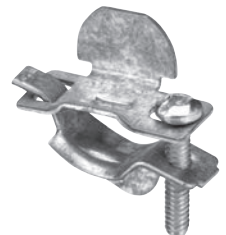
CI4006 / W101LX



CI4040



CI9049



See specification guide section for dimensions (D38-D39).

All NMD90 fittings are also suitable for NMWU90 of equivalent diameters, in dry locations. **NOTE:** 3/8 in. trade size connectors require a 1/2 in. knockout

Technical improvements are constantly taking place in the electrical industry. Cable manufacturers are changing their products from time to time. Accordingly, it is strongly suggested that you verify the cable size with the cable manufacturer prior to selecting a fitting.

## Nonmetallic Sheathed Cable

### Accessories



Cat. No.	Dimensions (in.)		Hole Size (in.)	Suggested Application NMD90 (Iomex)
	H	W		
<b>Cable Straps (Aluminum)</b>				
CI0	0.44	0.63	3/16	14/3-12/3
CI1	0.50	0.56	3/16	10/3
CI1-C	0.50	0.50	3/16	14/2-12/2; 14/3-12/3
CI2	0.50	0.63	3/16	14/3-10/3
CI3	0.57	0.68	3/16	14/3-10/3
CI4	0.81	1.06	3/16	4/3
CI5	1.06	1.25	7/32	3/3-2/3
CI10	0.19	0.44	3/16	14/2
CI11	0.31	0.56	3/16	12/2-10/2
<b>Nailing Straps (Zinc Plated Steel)</b>				
CI1544	0.25	0.51	-	14/2-12/2
<b>Nailing Straps (Polyethylene)</b>				
CI1544-P**	0.25	0.49	-	14/2-12/2
CI1546-P**	0.25	0.75	-	14/2-8/2
<b>Cable Staples (Galvanized Steel)</b>				
CIS-1	0.25	0.48	-	14/2-12/2
CIS-2	0.44	0.54	-	2 cables 14/2; 2 cables 12/2; 14/2-14/3-12/2-12/3-10/2-10/3
CIS-3*	0.49	0.70	-	10/2-8/2; 14/3-10/3
CIS-4*	0.76	0.86	-	14/2 - 8/2, 14/3 - 8/3, 14/4 - 10/4
<b>Double Cable Staples (Galvanized Steel)</b>				
CIS-1X2	0.25	0.48 x 2	-	14/2-12/2
CIS-1X2-FP3				
CIS-1X2-FP5				

\*Also suitable for application AC90(BX). See page D8.  
 Also suitable for NMWU90 of equivalent diameters.  
 \*\* cULus Listed



Cat. No.	Suggested Application
<b>Protector Plates (Galvanized Steel)</b>	
CI66	For wood stud
CI66-FPP	For forenze
CI66-PPH	For exterior wall, in front of wood stud
CI66-SS	For metal stud
CI66-T	For wood stud
CI66-XL	
CI66-XL-2	

As required by CEC rules 12-516 and 12-616